

EBMS

ELIGIBILITY BENEFIT MANAGEMENT SYSTEM

A dynamic cutting edge case management system which caters to a wide variety benefit and welfare programs.

CITI'S ELIGIBILITY AND BENEFIT MANAGEMENT SYSTEM (EBMS®)

- CITI's enterprise "Eligibility and Benefit Management system" (EBMS) is a reusable and highly configurable application which allows for effective decision making across a wide spectrum of Human Services
- EBMS is built on a foundation of core domain experience and customer focus
- EBMS caters to most federal and state benefit programs including Childcare, TANF, SNAP, Head Start and Foster Care
- EBMS can be scaled up or down based on the size of operations
- CITI's proprietary Eligibility rules engine can be quickly configured to manage all complexities of case management

EBMS KEY DIFFERENTIATORS

Enterprise Business Process management driven workflows allows the end to end tracking of cases through its entire lifecycle and Focused on ease of access and usability allowing users with little or no prior technology experience to utilize the application effectively.

BUSINESS PROCESS EXCELLENCE

Adherence to case management best practices by re engineering core HHS business processes to deliver benefits across the value chain

UNIVERSAL TECHNOLOGY STACK

Built on one of the most accepted technology stacks in the world

RICH AND SIMPLIFIED UI

Reduces critical training time

MODULAR & WORKFLOW CENTRIC

Pick and choose the solution that suits your business needs and scale

PERFORMANCE DRIVEN SYSTEM

Results include reduced case turnaround times and costs

COMPLETE MOBILITY

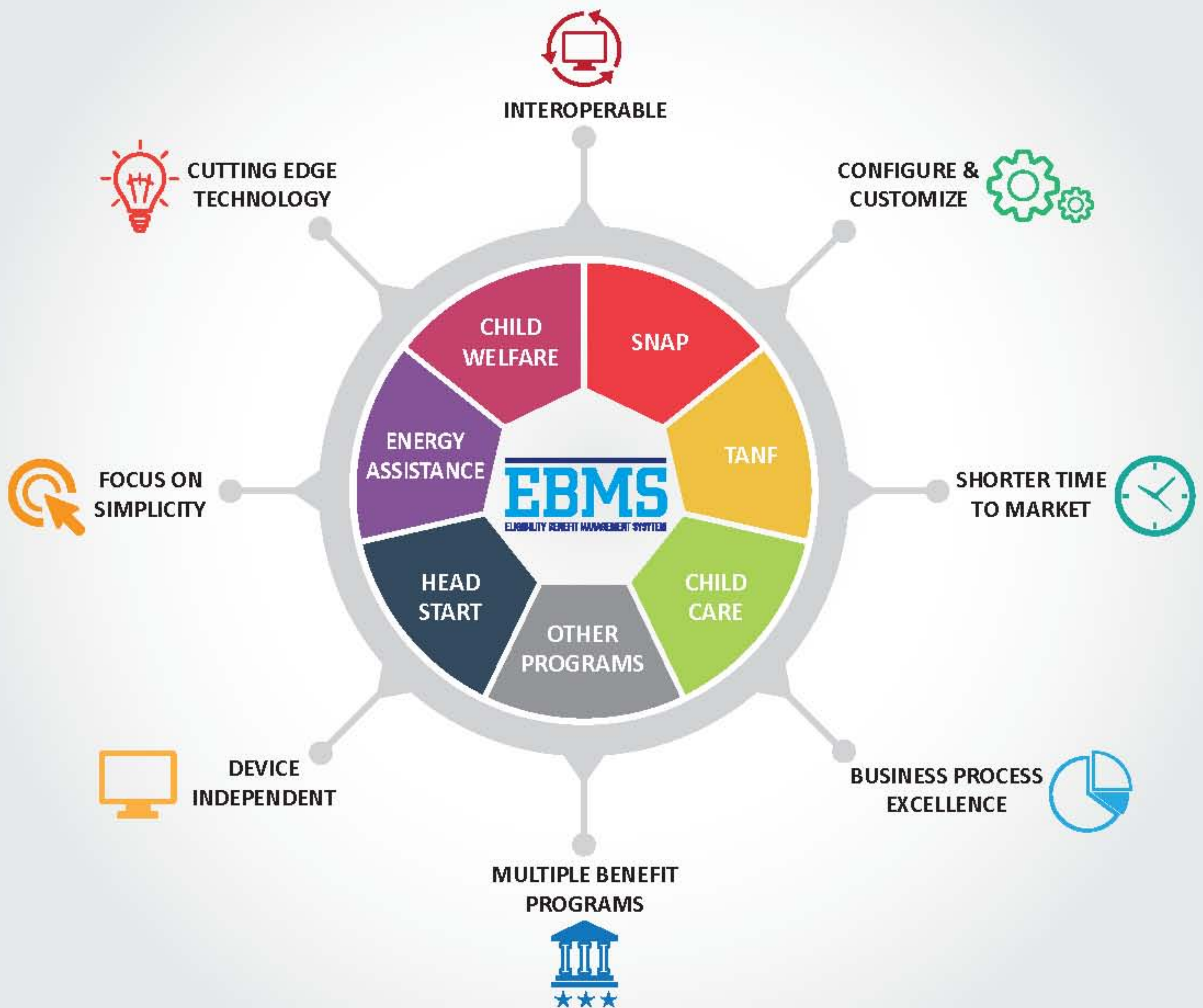
All EBMS modules can run on any mobile or handheld device

INTEGRATION SERVICES

Data connectors available to integrate with all available complementary COTS and legacy systems

COST BENEFIT

Choose from multiple deployment models to leverage cost benefits - Private Cloud and SAAS



FOCUS ON BUSINESS

- Caters to the entire case management lifecycle
- Self Service extension allows for anonymous verification of eligibility
- Mobility extension allows case workers and inspectors on field to retrieve and manage crucial case data
- Built to address real life challenges of case workers and stakeholders learnt over the past 5 years

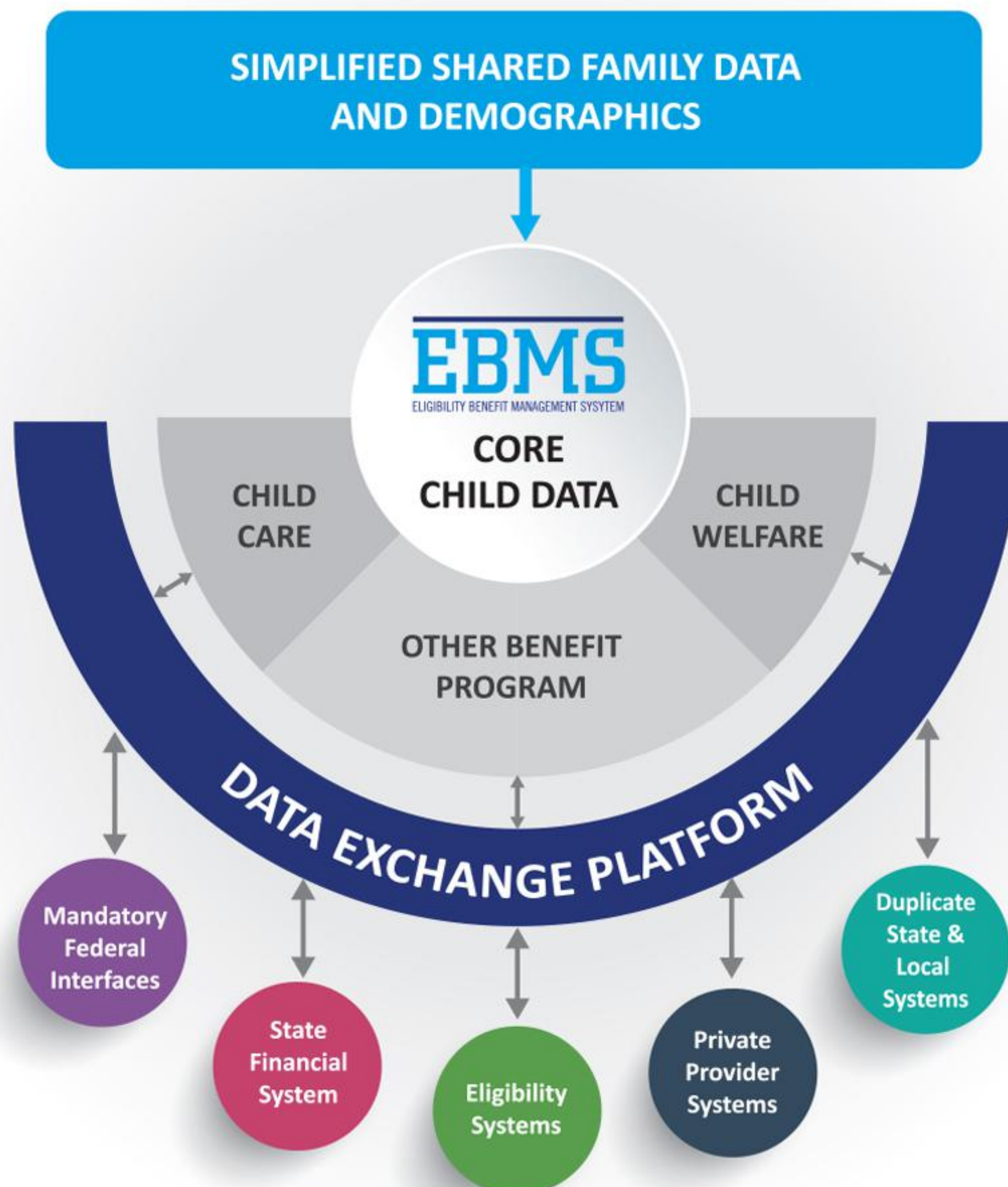
FOCUS ON TECHNOLOGY

- Built on a cutting edge technology platform to negate obsolescence, promote quality and minimize total cost of ownership
- Multiple deployment models to leverage cost benefits and promote faster time to market

EBMS FEATURES CAN FAST TRACK YOUR CCWIS COMPLIANCE GOALS:

- Core Built on latest technology platform to negate obsolescence for years to come
- Seamless Integration with all current and future infrastructural components
- Simplified 'One time' data entry for multiple benefit programs
- Built to create and maintain accurate, complete and consistent case data throughout the case lifecycle
- Data integrity maintained throughout the case lifecycle to reduce misinterpretation of data
- In built Dynamic workflows promotes secure information sharing through the value chain
- Simplicity of Case management workflow reduces learning curves
- Data connectors for interfacing with all federal, state and private welfare systems
- Bundled with data binders to all formats to seamlessly integrate legacy data
- Business process engineering driven to tailor to organizations of all sizes
- Core Framework capable to accommodate dynamic changes in business processes
- Focused on agile service delivery to achieve horizontal and vertical integration of organizational structures in a shorter span of time
- Generates custom and canned data quality reports to effectively help in implementing a data quality plan or monitoring an existing plan

EBMS IS CCWIS COMPLIANCE READY



EBMS is a product developed and offered by the team at Creative Information Technology, Inc. (CITI). Founded in 1996, CITI is a forward thinking information technology company that delivers quality solutions and services provided primarily to public sector organizations in the United States and abroad.



CITI has won many prestigious awards, most notable being the 'Inc. 500' and The American Council for Technology and Industry Advisory Council (ACT/IAC) "Top 20" Excellence.gov award.

CITI was founded in 1996 and provides a full portfolio of IT products and services for government and commercial customers. Our mission is to provide innovative and cost effective solutions that enable our clients to succeed at their daily mission. CITI is SEI CMMI-Level 4, ISO 27001 and ITIL certified. We are a global and diversely talented organization of IT and business professionals with a mission to develop enterprise-level products that are flexible, scalable, adaptable and dynamically configurable. CITI serves, amongst others, multiple US Federal Government agencies including the Department of Homeland Security and Department of State.

Contact us for more information on CITI's EBMS and how it can help you for effective decision making across a wide spectrum of Human Services



Creative Information Technology, Inc.

7799 Leesburg Pike, Suite 500N, Falls Church, Virginia 22043.

Phone: (703) 483-4300 | Email: ebmssales@citi-us.com | www.citi-us.com